

# IGS-9084GP-LA

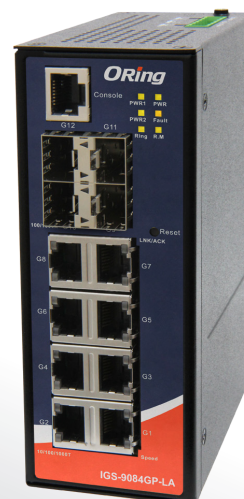


IGS-9084GP-LA

## ➤ Industrial Slim 12-port managed Gigabit Ethernet switch with 8x10/100/1000Base-T(X) ports and 4x100/1000Base-X, SFP socket, Generic version

### Features

- Support **O-Ring** (recovery time < 30ms) and MSTP(RSTP/STP compatible) for Ethernet Redundancy
- **Open-Ring** support the other vendor's ring technology in open architecture
- **O-Chain** allow multiple redundant network rings
- Support standard IEC 62439-2 **MRP\*NOTE** (Media Redundancy Protocol) function
- Support IPV6 new internet protocol version
- Support Modbus TCP protocol
- Support IEEE 802.3az **Energy-Efficient Ethernet** technology
- Provided HTTPS/SSH protocol to enhance network security
- Support SMTP client and NTP server protocol
- Support IP-based bandwidth management
- Support application-based QoS management
- Support Device Binding security function
- Support DOS/DDOS auto prevention
- IGMP v2/v3 (IGMP snooping support) for filtering multicast traffic
- Support SNMP v1/v2c/v3 & RMON & 802.1Q VLAN Network Management
- Support ACL, TACACS+ and 802.1x User Authentication for security
- Support 9.6K Bytes Jumbo Frame
- Syslog/SNMP Trap notification for warning of unexpected event
- Support **DBU-01** backup unit device to quickly backup/restore configuration
- Web-based ,SNMP v1/v2c/v3, Telnet, Console (CLI), and Windows utility (**Open-Vision**) configuration
- Support LLDP Protocol
- Robust EMS design, provide **8KV ESD** and **4KV Surge** protection
- Rigid IP-30 housing design
- DIN-Rail and wall mounting enabled



EtherNet/IP®

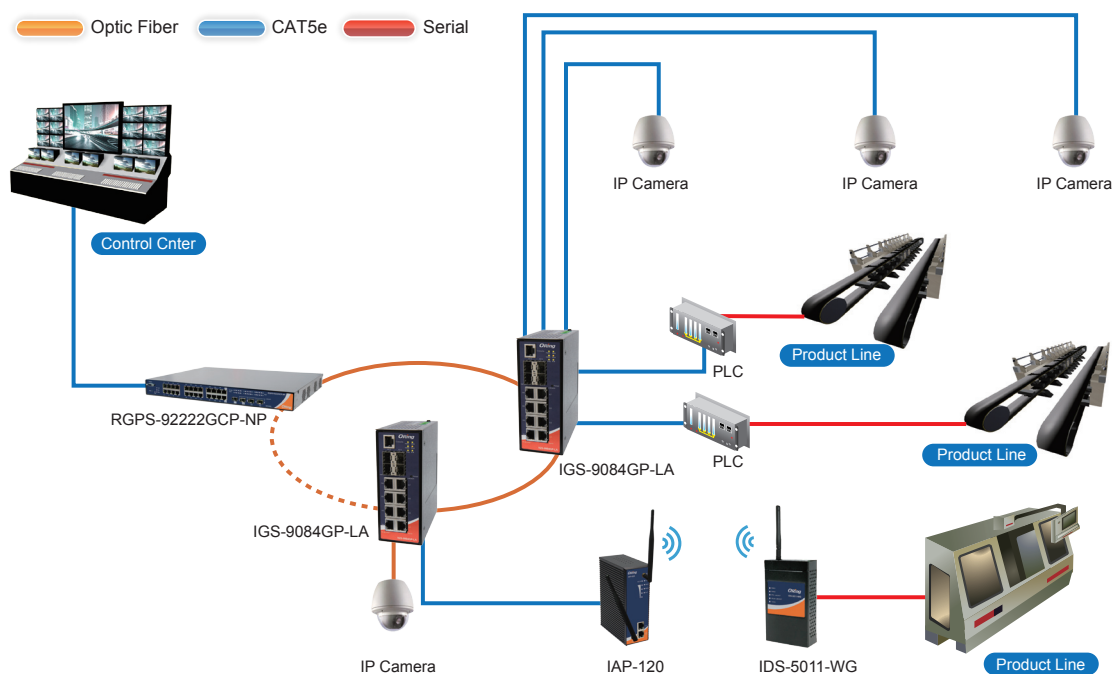


### Introduction

IGS-9084GP-LA is slim type managed Ethernet switch with 8x10/100/1000Base-T(X) ports and 4x100/1000Base-X SFP ports. With completely support of Ethernet Redundancy protocol, **O-Ring** (recovery time < 30ms over 250 units of connection) and MSTP (RSTP/STP compatible) can protect your mission-critical applications from network interruptions or temporary malfunctions with its fast recovery technology. And support wide operating temperature from -40°C to 75°C. IGS-9084GP-LA can also be managed centralized and convenient by Open-Vision, Except the Web-based interface, Telnet and console (CLI) configuration. Therefore, the switch is one of the most reliable choice for highly-managed and Fiber Ethernet application.

\*NOTE: This function is available by request only

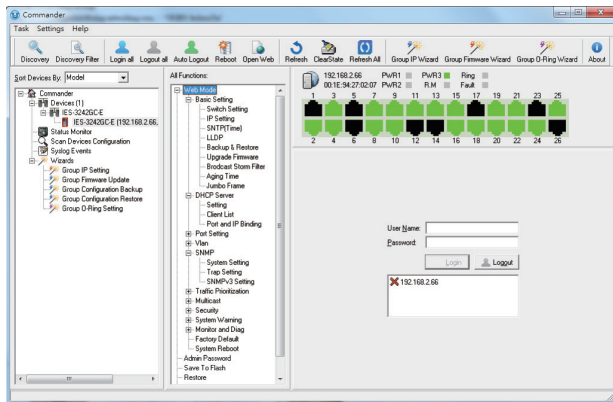
- **O-Chain** : O-Chain is the revolutionary network redundancy technology that provides the add-on network redundancy topology for any backbone network, O-Chain allows multiple redundant network rings of different redundancy protocols to join and function together as a larger and more robust compound network topology. O-Chain providing ease-of-use while maximizing fault-recovery swiftness, flexibility, compatibility, and cost-effectiveness in one set of network redundancy topology.
- **Open-Ring** : Open-Ring is an enhanced redundant technology that makes ORing's switches compatible with other vendor's proprietary redundant ring technologies. It enables ORing's switches to form a single ring with other vendor's switch. In cases where the ring is setup using proprietary technology, ORing offers a compatibility service where ORing can make its switches compatible with your particular network requirements.
- **O-Chain** : O-Chain is the revolutionary network redundancy technology that provides the add-on network redundancy topology for any backbone network, O-Chain allows multiple redundant network rings of different redundancy protocols to join and function together as a larger and more robust compound network topology. O-Chain providing ease-of-use while maximizing fault-recovery swiftness, flexibility, compatibility, and cost-effectiveness in one set of network redundancy topology.
- **MRP<sup>\*NOTE</sup>** : Media Redundancy Protocol (MRP) is a data network protocol standardized by the IEC 62439-2. It allows rings of Ethernet switches to overcome any single failure with recovery time much faster than achievable with Spanning Tree Protocol.
- **IP-based Bandwidth Management** : The switch provide advanced IP-based bandwidth management which can limit the maximum bandwidth for each IP device. User can configure IP camera and NVR with more bandwidth and limit other device bandwidth.
- **Application-Based QoS** : The switch also support application-based QoS. Application-based QoS can set highest priority for data stream according to TCP/UDP port number.
- **Device Binding Function** : ORing special Device Binding function can only permit allowed IP address with MAC address to access the network. Hacker cannot access the IP surveillance network without permission. It can avoid hacker from stealing video privacy data and attacking IP camera, NVR and controllers.
- **Advanced DOS/DDOS Auto Prevention** : The switch also provided advanced DOS/DDOS auto prevention. If there is any IP flow become big in short time, the switch will lock the source IP address for certain time to prevent the attack. It's hardware based prevention so it can prevent DOS/DDOS attack immediately and completely.
- **Modbus TCP** : This is a Modbus variant used for communications over TCP/IP networks.
- **IEEE 802.3az Energy-Efficient Ethernet** : This is a set of enhancements to the twisted-pair and backplane Ethernet family of networking standards that will allow for less power consumption during periods of low data activity. The intention was to reduce power consumption by 50% or more.



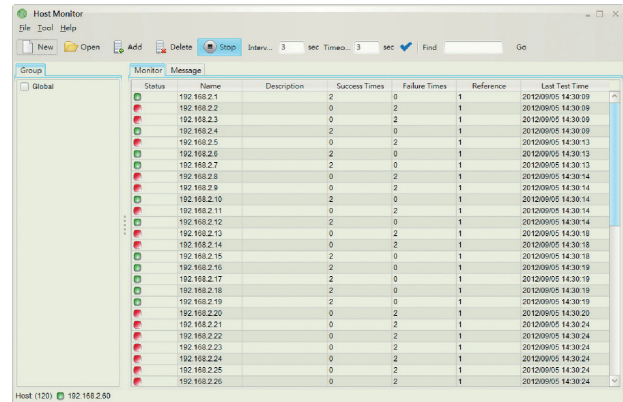
\*NOTE: This function is available by request only

## Open-Vision

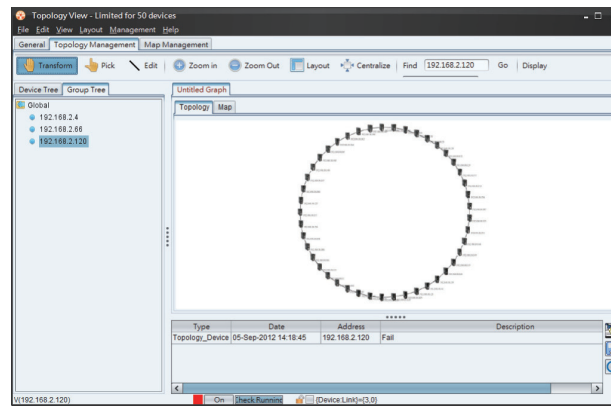
ORing's switches are intelligent switches. Different from other traditional redundant switches, ORing provides a set of Windows utility (Open-Vision) for user to manage and monitor all of industrial Ethernet switches on the industrial network.



Commander

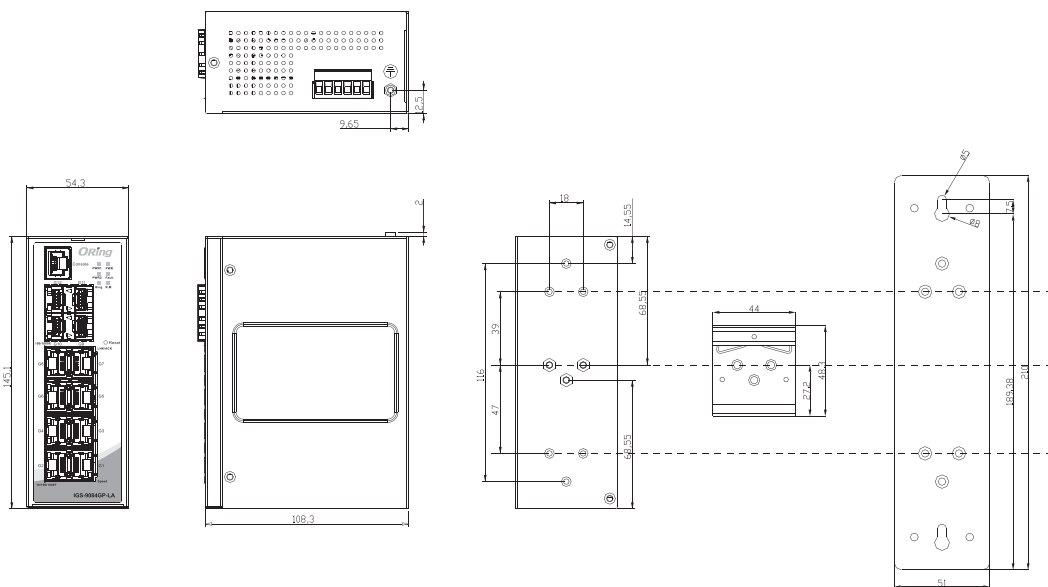


Host Monitor



Topology View

## Dimensions



(Unit=mm)

## Specifications

| ORing Switch Model                                    | IGS-9084GP-LA  |
|---|--|
| <b>Physical Ports</b>                                 |  |
| 10/100/1000Base-T(X) with Ports in RJ45 Auto MDI/MDIX | 8  |
| 100/1000Base-X with SFP port                          | 4  |
| <b>Technology</b>                                     |  |
| Ethernet Standards                                    | IEEE 802.3 for 10Base-T<br>IEEE 802.3u for 100Base-TX and 100Base-FX<br>IEEE 802.3ab for 1000Base-T<br>IEEE 802.3z for 1000Base-X<br>IEEE 802.3x for Flow control<br>IEEE 802.3ad for LACP (Link Aggregation Control Protocol)<br>IEEE 802.1p for COS (Class of Service)<br>IEEE 802.1Q for VLAN Tagging<br>IEEE 802.1D for STP (Spanning Tree Protocol)<br>IEEE 802.1w for RSTP (Rapid Spanning Tree Protocol)<br>IEEE 802.1s for MSTP (Multiple Spanning Tree Protocol)<br>IEEE 802.1x for Authentication<br>IEEE 802.1AB for LLDP (Link Layer Discovery Protocol) |
| MAC Table   | 8k   |
| Priority Queues                                       | 8  |
| Processing  | Store-and-Forward  |
| Share Data Buffer                                     | 4Mbit  |
| Switch Properties                                     | Switching latency: 7 us<br>Switching bandwidth: 24Gbps<br>Throughput (packet per second) : 17.856Mpps@64Bytes packet<br>Max. Number of Available VLANs: 4096<br>VLAN ID Range : VID 0 to 4095<br>IGMP multicast groups: 256 for each VLAN<br>Port rate limiting: User Define   |
| Jumbo frame   | Up to 9.6K Bytes   |
| Security Features                                     | Device Binding security feature<br>Enable/disable ports, MAC based port security<br>Port based network access control (802.1x)<br>VLAN (802.1Q) to segregate and secure network traffic<br>Radius centralized password management<br>SNMPv3 encrypted authentication and access security<br>Https / SSH enhance network security   |
| Software Features                                     | STP/RSTP/MSTP (IEEE 802.1D/w/s)<br>Redundant Ring (O-Ring) with recovery time less than 30ms<br>TOS/Diffserv supported<br>Quality of Service (802.1p) for real-time traffic<br>VLAN (802.1Q) with VLAN tagging<br>IGMP Snooping<br>IP-based bandwidth management<br>Application-based QoS management<br>DOS/DDOS auto prevention<br>Port configuration, status, statistics, monitoring, security<br>DHCP Server/Client/Relay<br>SMTP Client<br>Modbus TCP<br>NTP server  |
| Network Redundancy                                    | O-Ring<br>Open-Ring<br>O-Chain<br>MRP* <b>NOTE</b><br>MSTP (RSTP/STP compatible)   |
| RS-232 Serial Console Port                            | RS-232 in RJ45 connector with console cable. 115200bps, 8, N, 1  |
| <b>LED indicators</b>                                 |  |
| Power Indicator (PWR)                                 | Green : Power LED x 3  |
| Ring Master Indicator (R.M.)                          | Green : Indicates that the system is operating in O-Ring Master mode   |
| O-Ring Indicator (Ring)                               | Green : Indicates that the system operating in O-Ring mode<br>Green Blinking : Indicates that the Ring is broken.  |
| Fault Indicator (Fault)                               | Amber : Indicate unexpected event occurred   |

\*NOTE: This function is available by request only

|  |   |
|--|---|
| 10/100/1000Base-T(X) RJ45 Port Indicator | Green for Port LINK/ACT indicator<br>Dual color LED for speed indicator: Green for 1000Mbps / Amber for 100Mbps / off-light for 10Mbps  |
| 100/1000Base-X SFP Port Indicator        | Green for port Link/Act.  |
| <b>Fault contact</b>                     |   |
| Relay                                    | Relay output to carry capacity of 1A at 24VDC   |
| <b>Reset Function</b>                    |   |
| Reset Button                             | < 5 sec: System reboot, > 5 sec: Factory default  |
| <b>Power</b>                             |   |
| Redundant Input power                    | Dual DC inputs. 12~48VDC on 6-pin terminal block  |
| Power consumption (Typ.)                 | 13 Watts  |
| Overload current protection              | Present   |
| Reverse Polarity Protection              | Present   |
| Hi-POT                                   | 1.5KV AC  |
| <b>Physical Characteristic</b>           |   |
| Enclosure                                | IP-30   |
| Dimension (W x D x H)                    | 54.3 (W) x 108.3 (D) x 145.1 (H) mm (2.13 x 4.26 x 5.71 inches)   |
| <b>Environmental</b>                     |   |
| Storage Temperature                      | -40 to 85°C (-40 to 185°F)  |
| Operating Temperature                    | -40 to 75°C (-40 to 167°F)  |
| Operating Humidity                       | 5% to 95% Non-condensing  |
| <b>Regulatory approvals</b>              |   |
| EMC                                      | CE EMC (EN 55024, EN 55032), FCC Part 15 B  |
| EMI                                      | EN 55032, CISPR32, EN 61000-3-2, EN 61000-3-3, FCC Part 15 B class A  |
| EMS                                      | EN 55024 (IEC/EN 61000-4-2 (ESD): Contact 8KV, Air 10KV), IEC/EN 61000-4-3 (RS), IEC/EN 61000-4-4 (EFT Power 2KV, Single 2KV), IEC/EN 61000-4-5 (Surge: Power 4KV, RJ45 4KV), IEC/EN 61000-4-6 (CS), IEC/EN 61000-4-8(PFMF), IEC/EN 61000-4-11 (DIP)) |
| Shock                                    | IEC60068-2-27   |
| Free Fall                                | IEC60068-2-31   |
| Vibration                                | IEC60068-2-6  |
| Safety                                   | EN60950-1   |
| MTBF                                     | 551478hrs   |
| Warranty                                 | 5 years   |

## Ordering Information

IGS-90 **A** **B** **CC** - **L** **A**

| Code Definition | 10/100/1000Base-T(X) Port Number | 100/1000Base-X SFP Port Number | Additional Port Type          | Version                 |
|-----------------|----------------------------------|--------------------------------|-------------------------------|-------------------------|
| <b>Option</b>   | <b>- 8:</b> 8 ports              | <b>- 4:</b> 4 ports            | <b>-GP:</b> Gigabit SFP ports | <b>L:</b> non-IEEE 1588 |

| Available Model | Model Name    | Description   |
|-----------------|---------------|---|
|                 | IGS-9084GP-LA | Industrial Slim 12-port managed Gigabit Ethernet switch with 8x10/100/1000Base-T(X) ports and 4x100/1000Base-X, SFP socket, Generic version |

### Packing List

- IGS-9084GP-LA x 1
- DIN-Rail Kit x 1
- ORing Tool CD x 1
- Wall-mount Kit x 2
- Quick Installation Guide x 1
- Console Cable x 1

### Optional Accessories (Can be purchased separately)

- Open-Vision M500 : Powerful Network
- Management Windows Utility Suit, 500 IP devices
- DBU-01 : backup unit device
- SFP100 series : 100Mbps SFP optical transceiver
- SFP 1G series : 1Gbps SFP optical transceiver