

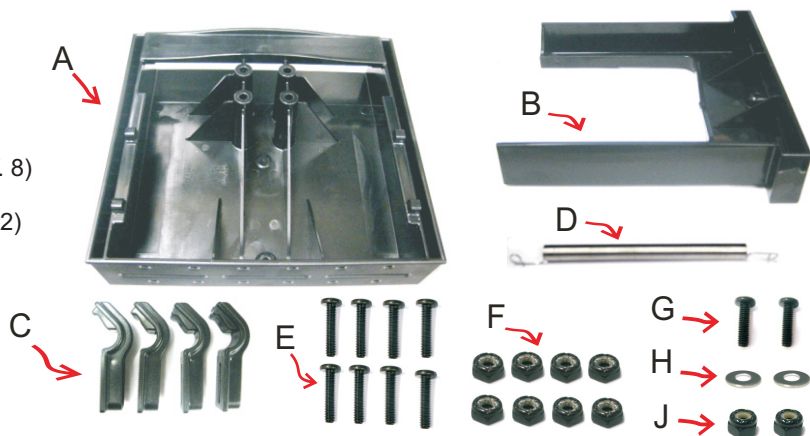
# RAM TOUGH-TRAY™ ASSEMBLY INSTRUCTIONS

## PARTS INDEX

- A. RAM LAPTOP TRAY HOUSING (QTY. 1)
- B. RAM LAPTOP TRAY SLIDE (QTY. 1)
- C. RAM RETAINING SIDE ARMS (QTY. 4)
- D. SPRING (QTY. 1)
- E. #10-24 X 7/8" LONG PAN HEAD MACHINE SCREWS (QTY. 8)
- F. #10-24 STAINLESS STEEL THIN NYLOCK NUTS (QTY. 8)
- G. #8-32 X 5/8" LONG PAN HEAD MACHINE SCREWS (QTY. 2)
- H. #10 STAINLESS STEEL FLAT WASHERS (QTY. 2)
- J. #8-32 STAINLESS STEEL NYLOCK NUTS (QTY. 2)

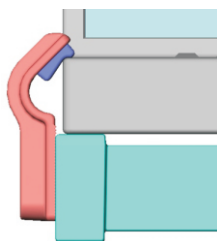
## TOOLS NEEDED

- PHILLIPS HEAD SCREWDRIVER
- 3/8" OPEN END WRENCH (OR ADJUSTABLE WRENCH)
- PEN OR PENCIL

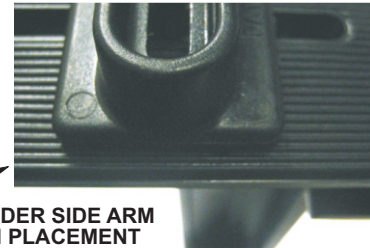


1.) PLACE YOUR LAPTOP ON (B) SLIDE. POSITION TWO (C) SIDE ARMS AGAINST SLIDE SO THAT RUBBER KEEPERS REST ON LAPTOP. COUNT THE VISIBLE RIDGES UNDER BOTH SIDE KEEPERS TO ENSURE EVEN PLACEMENT.

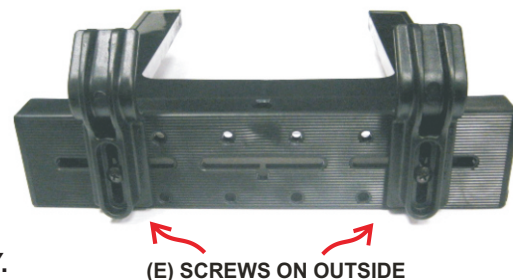
SOME LAPTOPS REQUIRE FRONT AND REAR SIDE ARMS TO BE SET AT DIFFERENT HEIGHTS.



COUNT RIDGES UNDER SIDE ARM TO ENSURE EVEN PLACEMENT



2.) REMOVE YOUR LAPTOP. ATTACH SAME SIDE ARMS TO (B) SLIDE USING (E) SCREWS AND (F) NUTS. SIDE ARMS MUST BE POSITIONED ABOVE SAME NUMBER OF RIDGES AS COUNTED IN STEP 1. TO AVOID BLOCKING PORTS ON YOUR LAPTOP, POSITION ARMS APPROPRIATELY BEFORE TIGHTENING. HOLD NUT IN PLACE WITH WRENCH, AND TIGHTEN WITH SCREWDRIVER.



REPEAT STEPS 1 AND 2 FOR (A) HOUSING PORTION OF TOUGH-TRAY.

3.) ATTACH (D) SPRING TO (B) SLIDE USING (G) SCREW, (H) WASHER AND (J) NUT AS SHOWN.

4.) INSERT (B) SLIDE INTO (A) HOUSING. INSERT (G) SCREW AND (H) WASHER THROUGH OPEN END OF (D) SPRING.

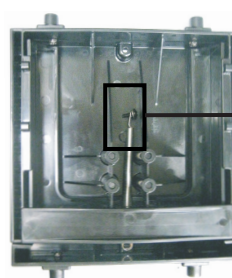


(B) SLIDE

POSITION (J) NUT ON OPPOSITE SIDE

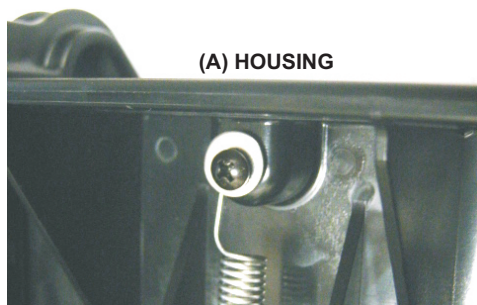
HOUSING

SLIDE

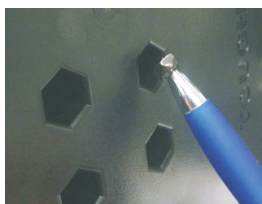


5.) EXPAND (D) SPRING UNTIL SCREW FROM STEP 4 ALIGNS WITH HOLE IN TRAY HOUSING. TIGHTEN SCREW THROUGH HOLE WITH (J) NUT POSITIONED ON OPPOSITE SIDE.

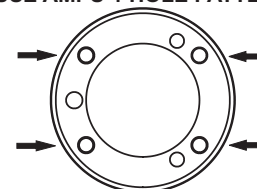
6.) WHILE HOLDING TOUGH-TRAY SIDeways, INSERT (F) NUT INTO HEX HOLE OF TRAY. KEEP NUT POSITIONED CORRECTLY BY INSERTING WITH A PEN OR PENCIL. HOLDING NUT IN PLACE, TURN TRAY UPSIDE DOWN AND POSITION **RAM-202** (INCLUDED IN VEHICLE MOUNT KIT) OVER 4 HOLES UNDER TRAY. SECURE (E) SCREW THROUGH **RAM-202** ONTO (F) NUT UNDER TRAY, AND REPEAT FOR REMAINING 3 HOLES. TIGHTEN ALL SCREWS.



(A) HOUSING



USE AMPS 4-HOLE PATTERN



RMR-INS-234-3